

safetylink™

INSTALLATION HANDBOOK: **PERMANENT LADDER SYSTEM**



READ ENTIRE HANDBOOK BEFORE INSTALLING ANY SAFETYLINK PRODUCT.


ALL PRODUCTS MUST BE INSTALLED IN ACCORDANCE WITH SAFETYLINK'S INSTALLATION HANDBOOK, USING ONLY PRODUCTS SUPPLIED BY SAFETYLINK PTY LTD.

FAILURE TO FOLLOW ALL WARNINGS AND INSTRUCTIONS MAY RESULT IN A SERIOUS INJURY OR DEATH.

**If you are uncertain and need help please email: safetylink@heightsafety.com.au
Phone: +61 249 972272 | Freecall: 1800 972272 | Fax: +61 249 971104
or visit our website www.heightsafety.com**

**INSTALLATION HANDBOOK
FOR SAFETYLINK™ PTY LTD
PERMANENT LADDER SYSTEM**

	PAGE
Warnings/Maintenance	3
Warranties	4
Components	5
Components 3D View	6
Assembling Ladder Systems	7
Top Section View of Assembling	8
Joining Multiple Sections	9
Installation of Extendable Stanchions	10
Lockable Door	11
Ladder Cage	12
Lockable Gate for Cage.....	13
Ladderhead Safety Bar	14
Ladder Platform	15
IN CASE OF ACCIDENT	16

 **During installation you must be safe at all times.**

WARNINGS

READ CAREFULLY – SOMEONE’S LIFE DEPENDS ON IT.

- Read Installation Handbook thoroughly before use.
- Ensure all ladder warnings are complied with at all times.
- Never use a Permanent Ladder to support more than one person.
- Never use a damaged Permanent Ladder.
- Visually inspect Permanent Ladder for any signs of deterioration before each use.
- When using a Permanent Ladder all safety procedures must be complied with in accordance with the correct safety code/s of practice/s for safe work at heights.
- Rivets should be present and secure before the Permanent Ladder is used.
- Under no circumstances shall any temporary repairs be made to any Permanent Ladder.
- When a Permanent Ladder is to be exposed to a corrosive or an extreme environment which could significantly reduce the working load of the Permanent Ladder, the manufacturer or a competent person shall be consulted prior to such exposure.
- All threads must be coated with Loctite prior to assembly.

MAINTENANCE:

- Visually inspect the components of the Permanent Ladder for corrosion. Superficial surface marking is permitted while deeper corrosion or pitting would require attention.
- Materials should not be placed on the Permanent Ladder while in storage.
- Permanent Ladder should be checked prior to every use and maintained in good condition.
- Under no circumstances shall any temporary repairs be made to any Permanent Ladder.

YOUR LIFE DEPENDS UPON THE CONTINUED EFFICIENCY AND DURABILITY OF THE EQUIPMENT SO A PROPER INSPECTION IS REQUIRED TO AVOID MISHAPS

IN ADDITION TO SAFETYLINK PTY LTD EQUIPMENT, ALL ANCILLARY EQUIPMENT MUST BE INSPECTED IN ACCORDANCE WITH APPLICABLE REGULATORY REQUIREMENTS AND THE MANUFACTURER’S INSTRUCTIONS.

 **FOR MAINTENANCE ADVICE AND SERVICES PLEASE CONTACT SAFETYLINK ON 0249 972272 OR 1800 972272 FOR YOUR NEAREST SAFETYLINK INSPECTION SERVICE CENTRE OR EMAIL: safetylink@heightsafety.com.au**

To download Installation Manuals on other SafetyLink products please visit our website at www.heightsafety.com

WARRANTIES

EXTRACT: SafetyLink Pty Ltd STANDARD TERMS AND CONDITIONS

- 11.1 To the extent permitted by law all implied conditions, warranties and undertakings are expressly excluded.
- 11.2 Except as provided in this clause the Company shall not be liable for any loss or damage, whether direct or indirect (including consequential losses or damage) arising out of any breach of contract by the Company or any negligence of the Company, its employees or agents.
- 11.3 Should the Company be liable for a breach of a guarantee, condition or warranty implied by the Australian Consumer Law (not being a guarantee, condition or warranty implied by sections 51, 52 and 53 of that Law) then its liability for a breach of any such condition or warranty express or implied shall be limited, at its option, to any one or more of the following.
- A) in case of Goods
- (I) the replacement of the Goods or the supply of equivalent Goods.
 - (II) the repair of the goods,
 - (III) the payment of the cost of replacing the Goods or acquiring equivalent Goods.
 - (IV) The payment of the cost of having the Goods repaired.
- Provided that any such Goods are returned to the Company by the Purchaser at the Purchaser's expense.
- B) in the case of services
- (i) the supply of the services again,
 - (ii) the payment of the cost of having the services supplied again.
- 11.4 The Company will not be liable for the costs of recovery of the Goods from the field, loss of use of the Goods, loss of time, inconvenience, incidental or consequential loss or damage, nor for any other loss or damage of her than as stated above, whether ordinary or exemplary, caused either directly or indirectly by use of the Goods.
- 11.5 The Company warrants that at the time of shipment, Products manufactured by it will be free from defects in material and workmanship. In the absence of a modified written warranty, the Company agrees to making good any such defects by repairing the same or at the Company's option by replacement, for a period of (1) one year from the date of shipment. This limited warranty applies provided that:
- (a) defects have arising solely from faulty materials or workmanship;
 - (b) the Products have not received maltreatment, inattention or interference;
 - (c) **the Products have been installed in accordance with the Company's Installation Handbooks using only products supplied by the Company;**
 - (d) accessories used with the Products are manufactured by or approved by the Company ;
 - (e) the Products are maintained in accordance with Australian Standard 1891.4 (section 9).
 - (f) you notify any claim under this warranty to SafetyLink in writing to the address below no later than 14 days after the event or occurrence concerning the produce giving rise to the claim and you pay all costs related to your claim.

This warranty does not apply to any defects or other malfunctions caused to the Goods by accident, neglect, vandalism, misuse, alteration, modification or unusual physical, environment or electrical stress.

Please note that the benefits to the purchaser (as a consumer) given by this warranty are in addition to your other rights and remedies under the Australian Consumer Law. Our goods come with guarantees that cannot be excluded under the Australian Consumer Law. You are entitled to a replacement or refund for a major failure and compensation for any other reasonably foreseeable loss or damage. You are also entitled to have the goods repaired or replaced if the goods fail to be of acceptable quality and the failure does not amount to a major failure.

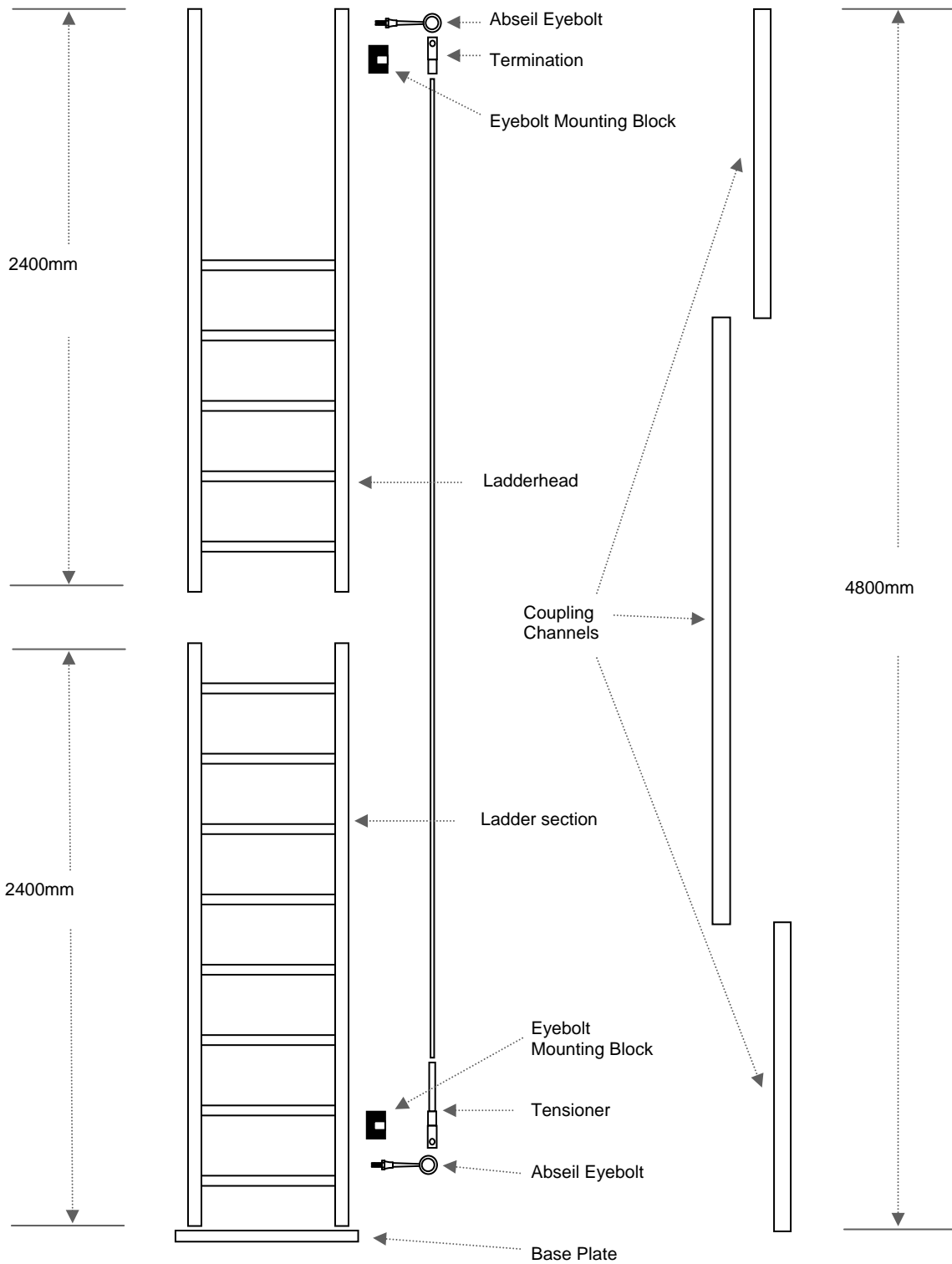
- 11.6 If any goods are not manufactured by the Company, the guarantee of the manufacturer thereof shall be accepted by the Purchaser as the only express warranty given in respect of the goods.
- 11.7 Except as provided in this clause 11, all express and implied warranties, guarantees and conditions under statute or general law as the merchantability, description, quality, suitability or fitness of the Products for any purpose or as to design, assembly, installation, materials or workmanship or otherwise are hereby expressly excluded (to the extent to which they may be excluded by law).

PLEASE SEE SAFETYLINK PTY LTD FULL STANDARD TERMS OF CONDITIONS OF SALE FOR FURTHER REFERENCE.



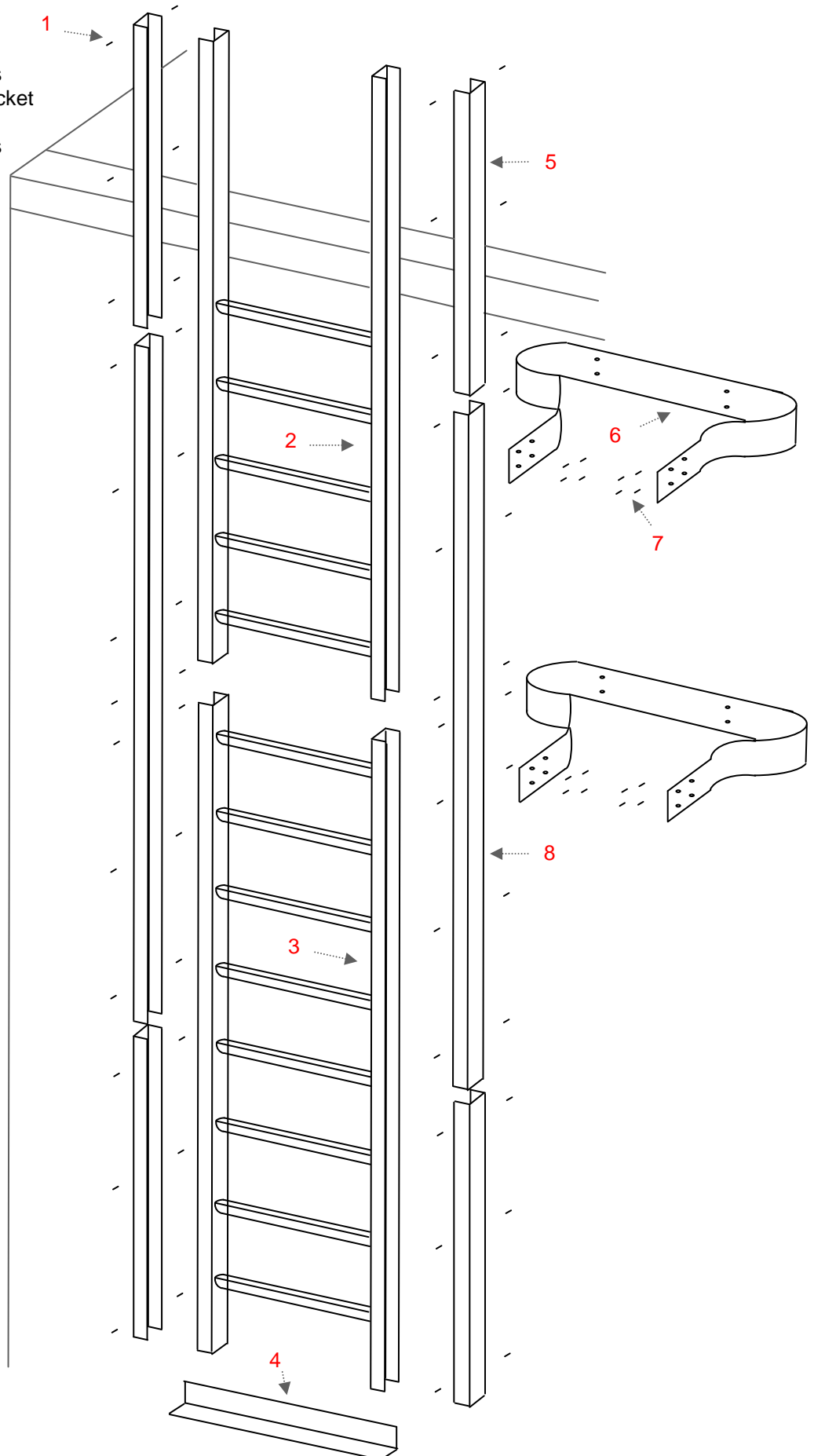
COMPONENTS – PERMANENT LADDER SYSTEM

⚠ During installation you must be safe at all times.



3D LADDER ASSEMBLY

1. 4.8mm Rivets
2. Ladderhead
3. Ladder Section
4. Base Plate
5. 1.2m Coupling channels
6. Standard wall fixing bracket
7. 4 x 4.8mm Rivets
8. 2.4m Coupling channels



ASSEMBLING - PERMANENT LADDER SYSTEM

READ CAREFULLY - SOMEONE'S LIFE DEPENDS ON IT.
Read in conjunction with diagrams

Step 1

Slide *Coupling Channel* over both sides of *Ladderhead and Ladder section* (When using more than two *Ladder sections*, *coupling channels* must overlap by more than one metre).

Step 2

Pop rivet the *Coupling Channel, Ladderhead and Ladder section* together down both stiles on front and back of the ladder. Ensure pop rivets are spaced no more than 500mm apart using 4.8mm rivets.

INSTALLING VERTICAL LIFE LINE

Step 1

Mark out position of *Abseil Eyebolt Mounting Block* on top and bottom of ladder rung, then drill 16.5 mm hole.

Step 2

Insert *Abseil Eyebolt Mounting Block*, screw *SafetyLink Abseil Eyebolt* a minimum of 30mm through ladder into *Abseil Eyebolt Mounting Block* and tighten locking hex nut. Locktite to be used on all threads.

Step 3

Pop rivet the *Abseil Eyebolt Mounting Blocks* using two 4.8mm rivets on each side.

Step 4

Attach 8mm cable using *Swageless Termination and Tensioner*.

Step 5

Adjust *Tensioner* until the slack is out of cable.



FIXING TO SOLID STRUCTURE

Step 1

Standard wall fixing brackets need to be installed at every joining and below the top run, no greater than 2.4m intervals.

Step 2

Pop rivet *Standard wall fixing bracket* to *Ladderhead and Ladder section* using four 4.8mm rivets on each side.

-  If any doubt exists as to the strength of the structure an engineer should make the assessment.
-  During installation you must be safe at all times.

Acceptable fasteners for the installation of the *Standard wall fixing bracket* to a surface:

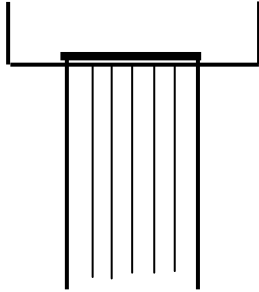
FIXING SURFACE

FASTENERS

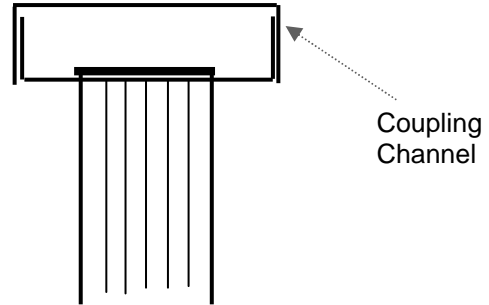
Timber	14 gauge Roofing Screws (To penetrate at least 35mm).
Metal Sheeting	14 gauge Roofing Screws (To penetrate the batten at least 35mm).
Concrete/Block Work	12mm Dynabolt or equivalent.

ASSEMBLING LADDER COMPONENTS

TOP SECTIONAL VIEW

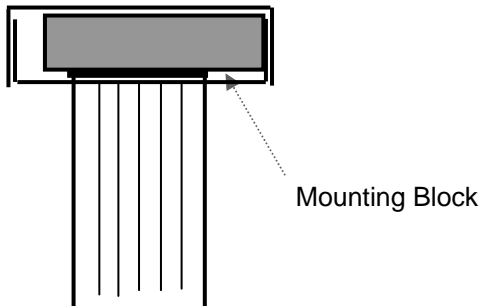


Unassembled Ladder



Slide Coupling Channel
over stile

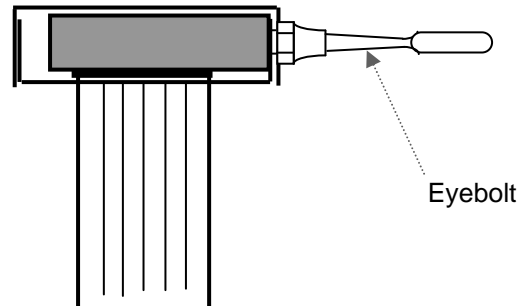
Mounting Block Installation:



Place mounting block into cavity of stile, flush with the top of ladder.

Mark centre of 16.5mm hole, then remove block.

Drill 16.5 mm hole and fit Mounting Block into cavity of stile.

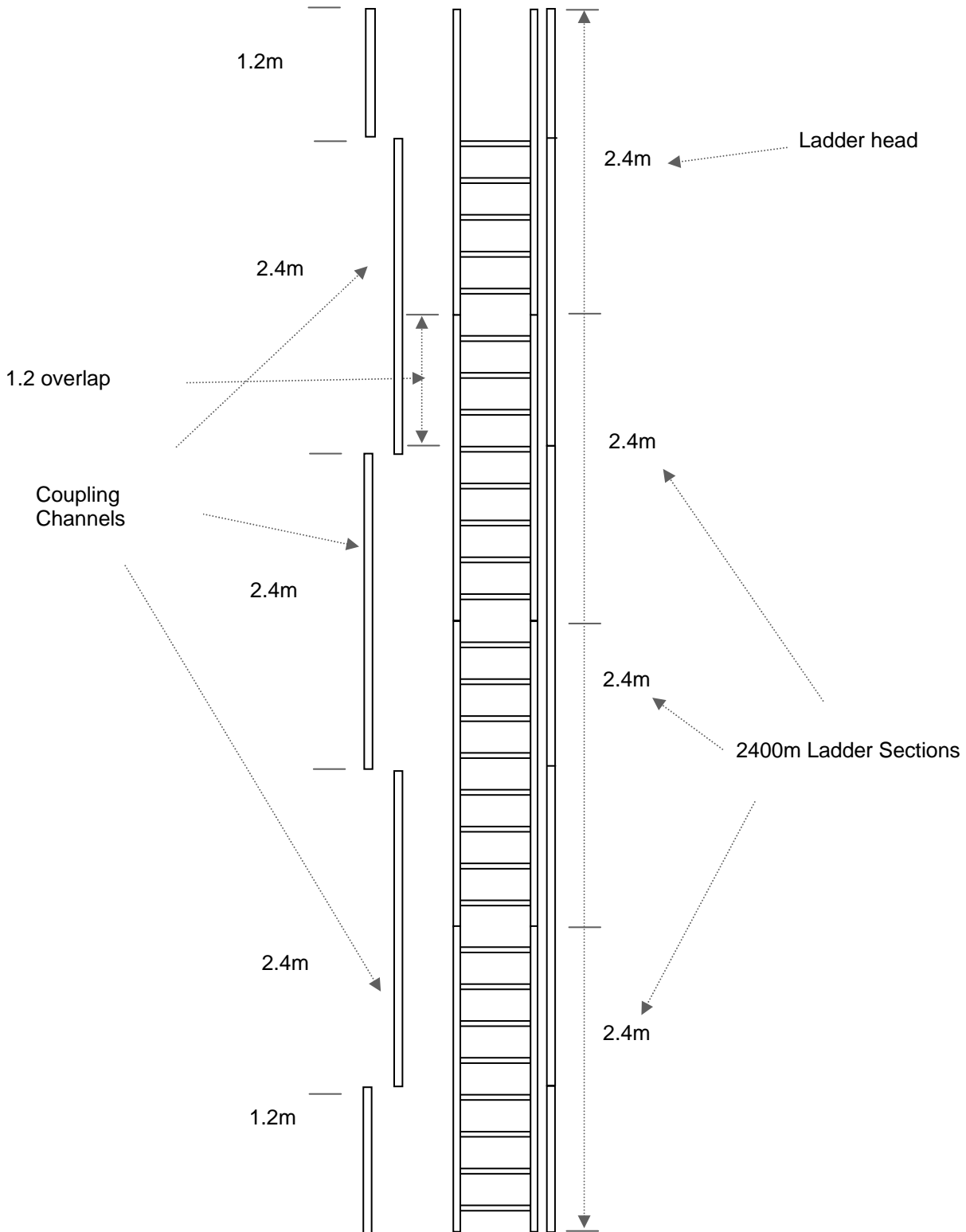


Insert Eyebolt through drilled hole and tighten as per eyebolt instructions (coat threads with Locktite).

JOINING MULTIPLE SECTIONS

When joining multiple sections, side Coupling Channels must overlap by 1.2 metres

⚠ During installation you must be safe at all times.





INSTALLATION OF EXTENDABLE STANCHIONS

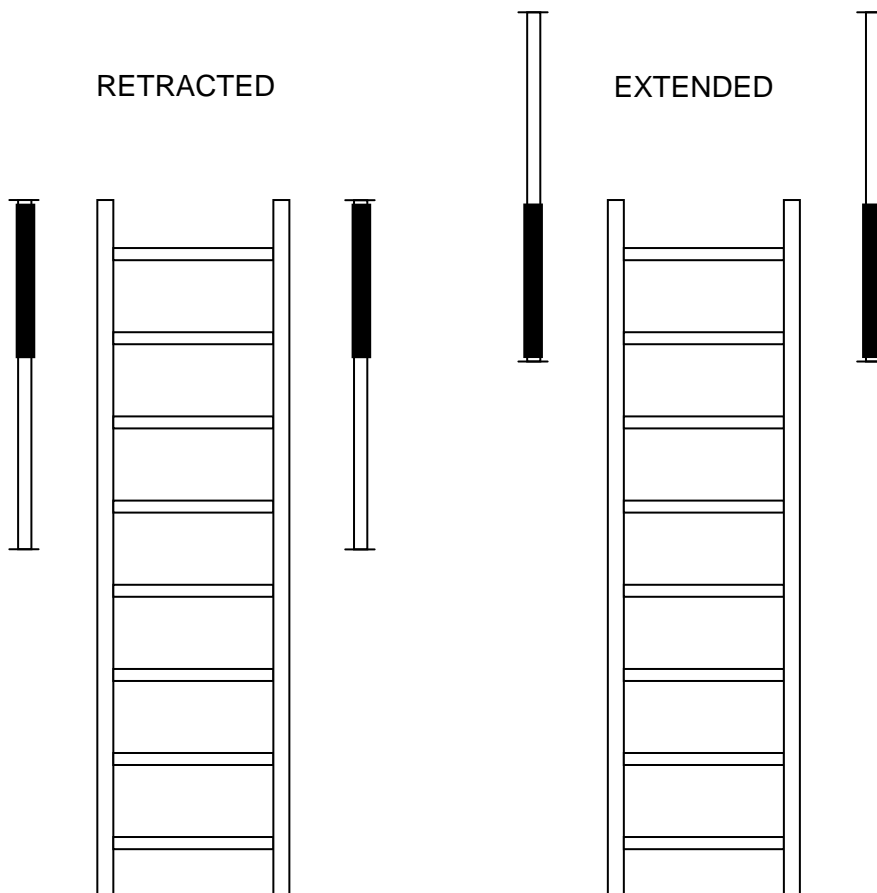
Once ladder has been installed up to underside of hatch using above installation manual:

1. Fit stanchions on the backside of ladder flush with top.
2. Pop rivet stanchion bracket to ladder (3 on each surface).

USING STANCHIONS


1. Fully extend stanchion.
2. Pull locking lever.

STANCHIONS TO BE FITTED TO BACKSIDE OF STILES



⚠ During installation you must be safe at all times.

LOCKABLE DOOR

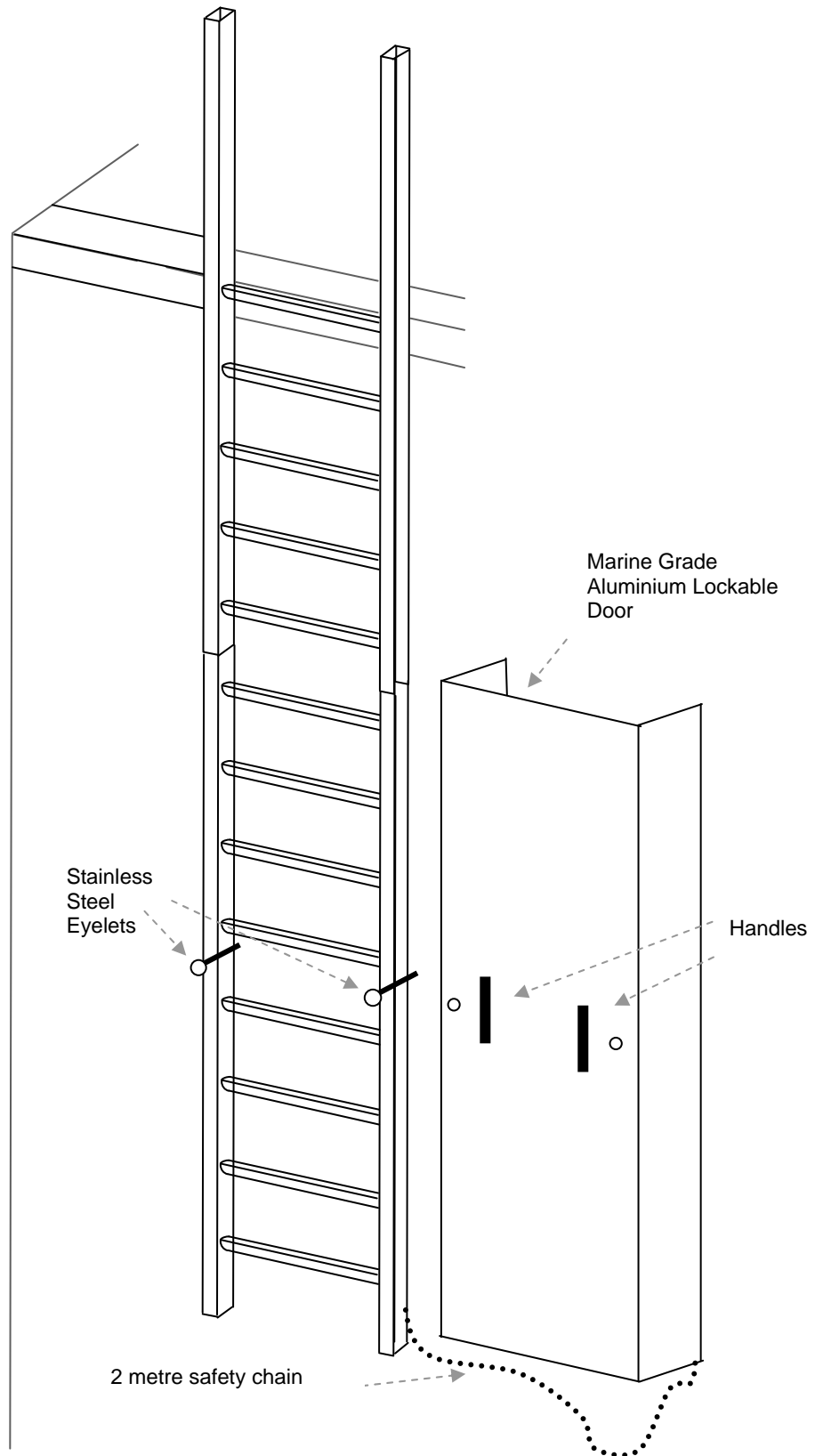
 During installation you must be safe at all times.

COMPONENTS

- 1 x Marine Grade Aluminium Door
- 1 x 2 metre safety chain
- 2 x Eyelets with nut/washers
- 2 x Bolt/Nut/Washers

INSTALLATION

1. Place the Ladder Door in the position required on the ladder.
2. Mark out Eyelet on stiles on installed ladder to line up with holes on Lockable Door.
3. Drill holes using 8mm drill, then bolt Eyelets to rungs.
4. To lock Ladder Door place door over Eyelets and padlock Eyelets. (Padlocks are not provided).
5. Attach safety chain using bolts provided (safety chain is provided to avoid Lockable Door being blown away or removed from site).



LADDER CAGE

⚠ During installation you must be safe at all times.

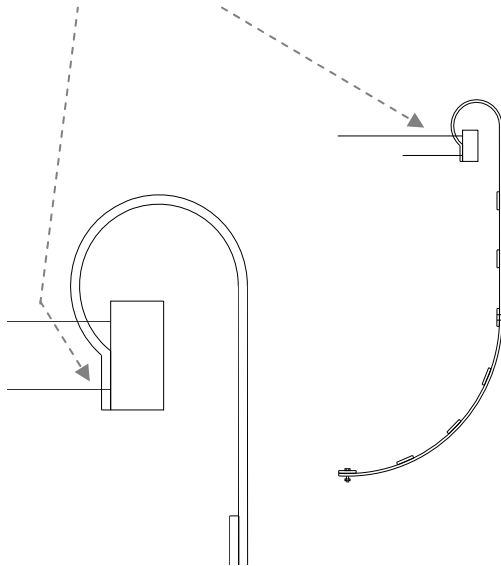
COMPONENTS

1 x Ladder Cage

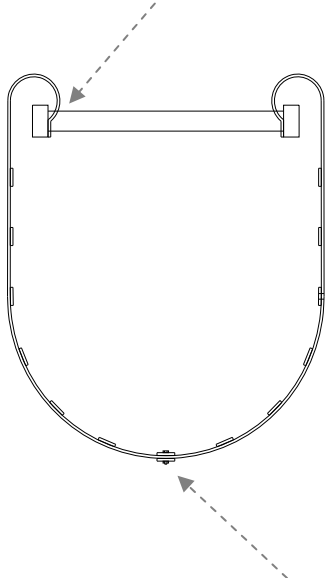
INSTALLATION

The cage is supplied in two halves.

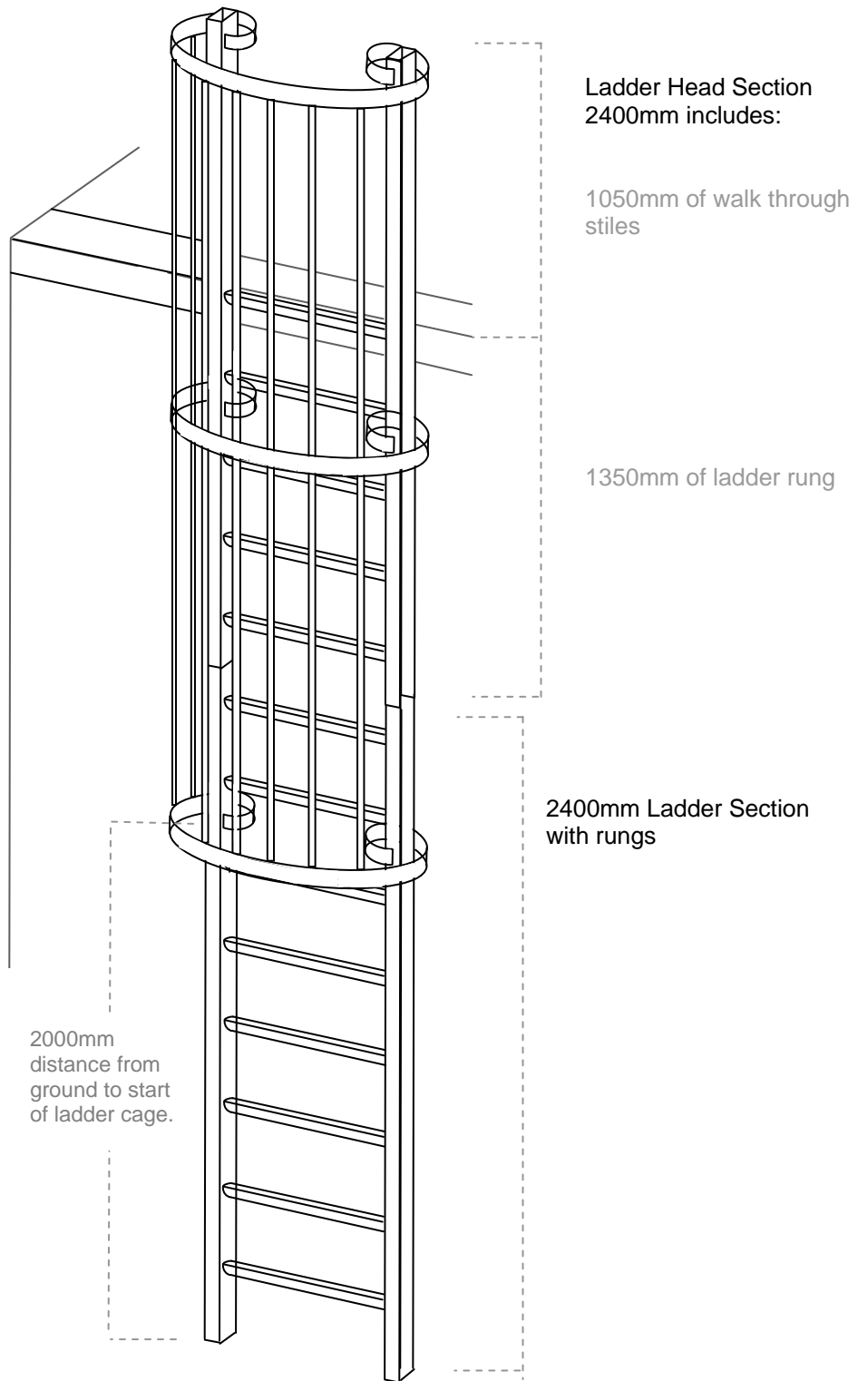
Install half of the ladder cage in desired location on ladder, using rivets



Join safety cage together using bolts provided, then rivet to the remaining side of ladder



Bolt & Nut provided to join the two halves of the safety cage together.





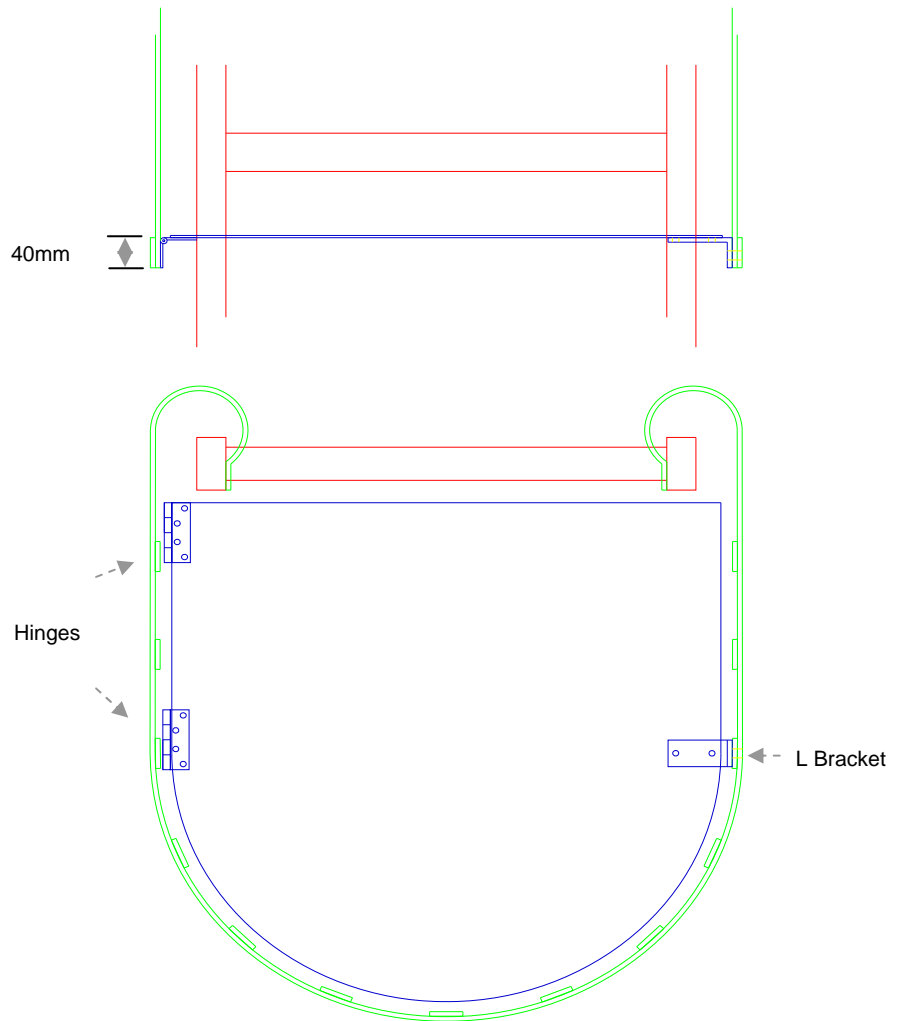
LOCKABLE GATE FOR LADDER CAGE

COMPONENTS

- 1 x Aluminium Gate with hinges attached
- 1 x L Bracket

INSTALLATION

- Install Ladder Cage.
- Position the Lockable Gate 40mm inside the ladder cage giving room for the hinges to be fixed to cage.
- Rivet the hinges on the lockable gate to the inside of the ladder cage giving an equal gap all around between the gate and the cage.
- Fit the L Bracket provided to the lockable gate to match up with a central upright on cage. Rivet the L Bracket to the Lockable Gate. Close the gate and mark a hole then drill hole into the ladder cage to match the 12mm hole on the bracket.
- To lock Ladder Gate close the gate and place a locking device through the 12mm hole (Locking devices are not provided).



⚠ During installation you must be safe at all times.

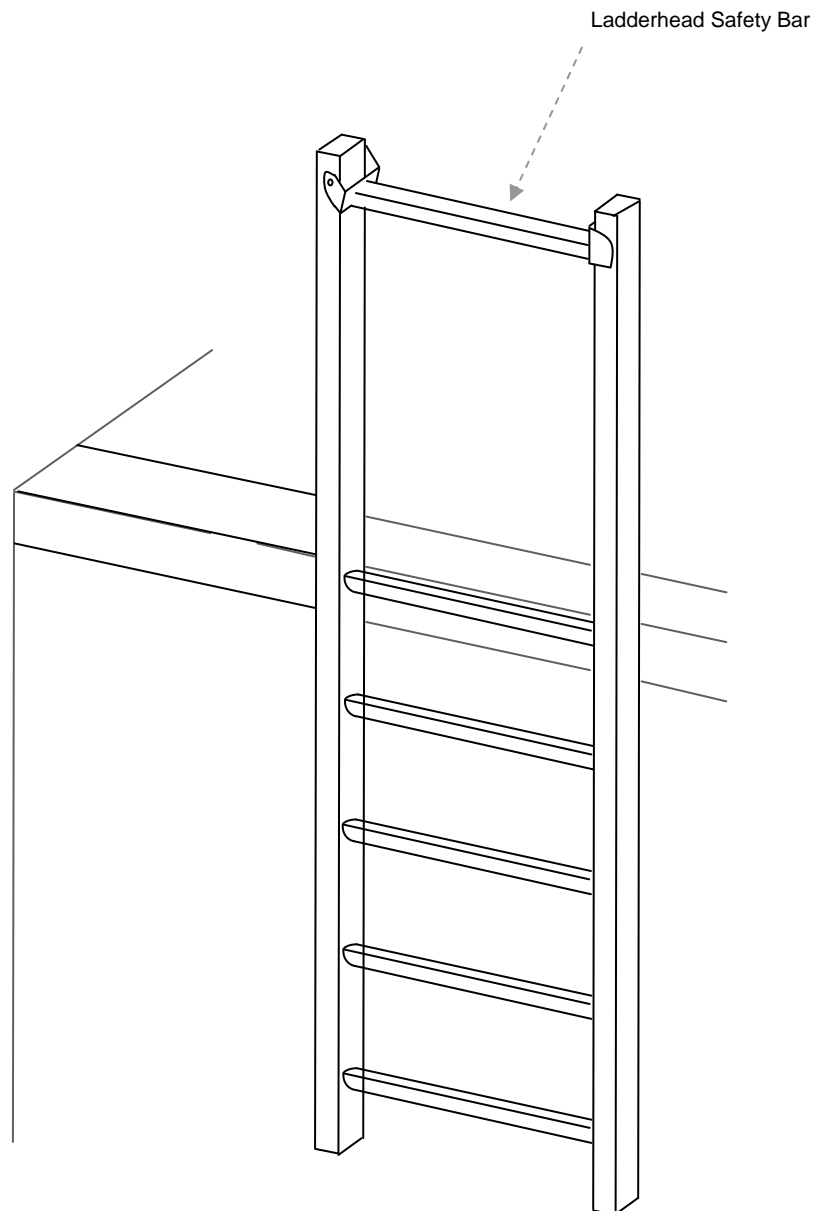
LADDER HEAD SAFETY BAR

COMPONENTS


- 1 x Ladderhead Safety Bar
- 1 x 8mm Bolt
- 1 x 8mm Nut

INSTALLATION

- a) Place Safety Bar in position as shown.
- b) Mark holes and drill using an 8mm drill.
- c) Bolt Safety Bar to Ladderhead using bolt provided.



LADDER PLATFORM

 During installation you must be safe at all times.

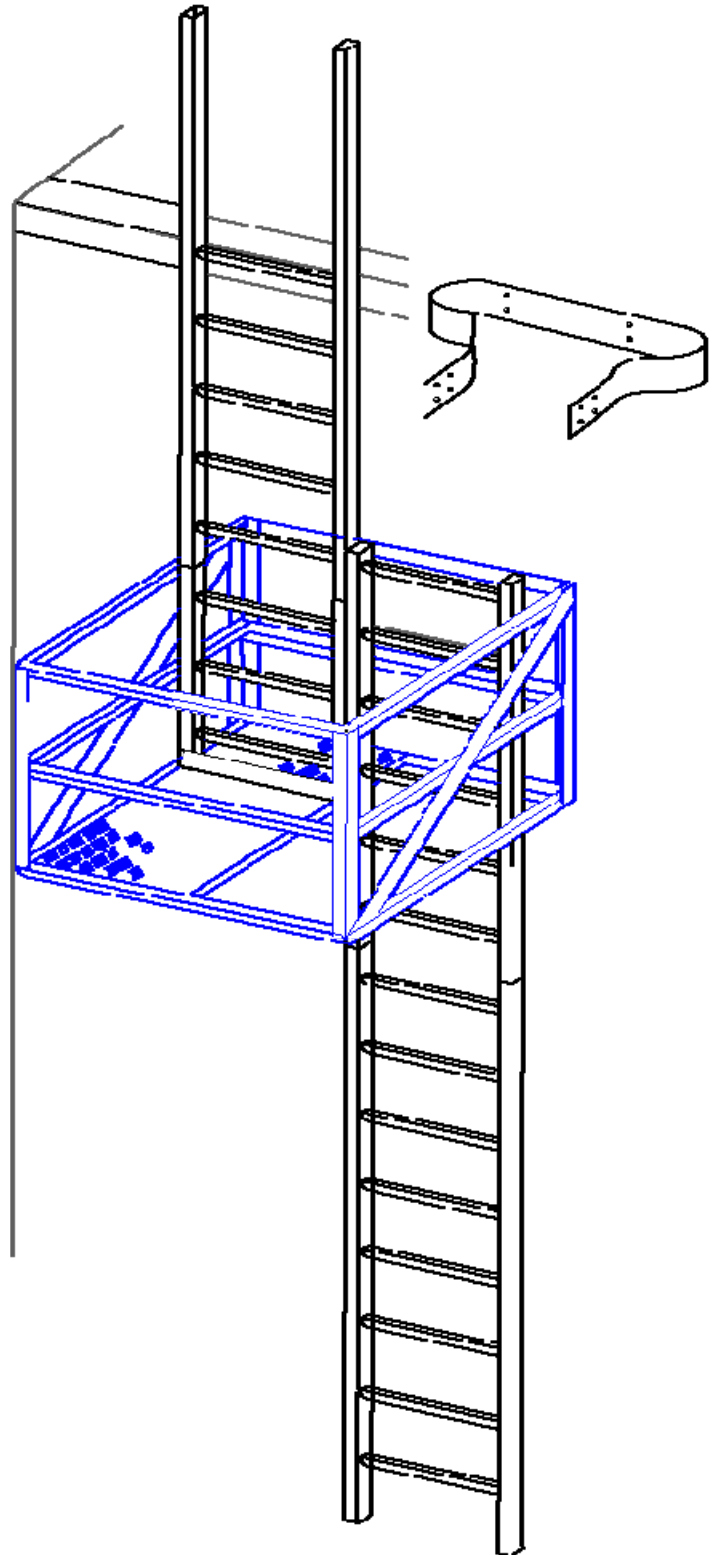
COMPONENTS

- 1 x Rest Platform.
- 1 x Top ladder.
- 1 x Bottom ladder.

INSTALLATION

- a) Establish the height required for the Rest Platform.
- b) There are four horizontal pieces of angles on the back of the Rest Platform. These are designed for fixing against the wall. Each angle requires a **minimum** of three fixing points. 12 fixing points in total.
- c) Once the rest platform is secured the bottom ladder can be put in place as described in pages 5-9. The bottom ladder should extend to the top of the rest platform (see example).
- d) The top ladder can now be assembled as per pages 5-9.

NOTE: Assembled fixing brackets not shown for this example for a clearer picture.



IN CASE OF ACCIDENT

⚠ A FALL RESCUE PLAN SHOULD BE DEVELOPED PRIOR TO USING SAFETYLINK EQUIPMENT.

⚠ Persons working at heights should not work alone.

It is critical that before using any SafetyLink Systems a fall rescue plan is in place for any persons suspended mid-air following a fall. Serious injury or death can occur in a matter of minutes, particularly if a person's movement or breathing is restricted or loss of consciousness has occurred. In accordance with your fall rescue plan and appropriate first aid procedures it is essential to remove the person from the suspended position as quickly as possible.

In accordance with AS/NZS 1891.4:2000 clause 9.5

EQUIPMENT WHICH HAS ARRESTED A FALL OR SHOWS A DEFECT

Any piece of equipment including both personal and permanently installed items, which has been used to arrest a fall or which shows any defect during operator or periodic inspection shall be withdrawn from service immediately and a replacement obtained if necessary. A label indicating the condition or defect should be attached to the equipment, and it should be examined by a competent person who will decide whether the equipment is to be destroyed or repaired if necessary and returned to service. In the latter case, details of any repair shall be documented and a copy given to the operator.



DISTRIBUTOR:

www.heightsafety.com