

safetylink™

INSTALLATION HANDBOOK:
Temporary Anchor
One Person Anchor



READ ENTIRE HANDBOOK BEFORE INSTALLING ANY SAFETYLINK PRODUCT.

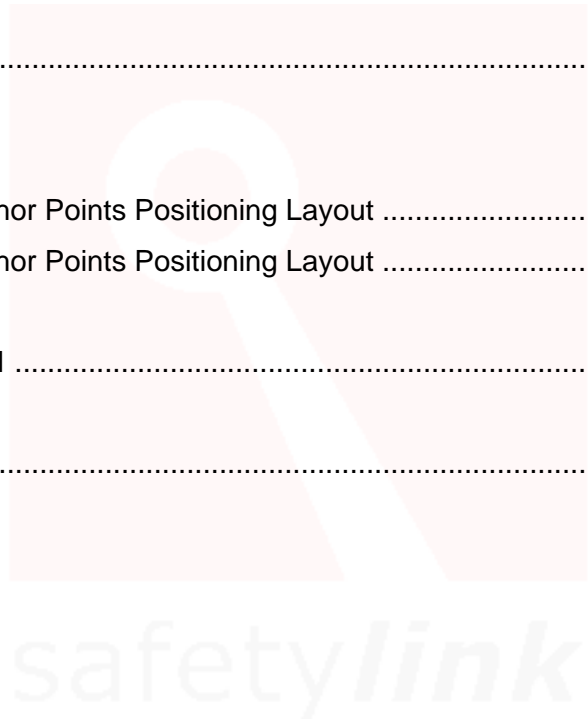
ALL PRODUCTS MUST BE INSTALLED IN ACCORDANCE WITH SAFETYLINK'S INSTALLATION HANDBOOK, USING ONLY PRODUCTS SUPPLIED BY SAFETYLINK PTY LTD.

**FAILURE TO FOLLOW ALL WARNINGS AND INSTRUCTIONS MAY RESULT
IN A SERIOUS INJURY OR DEATH.**

If you are uncertain and need help please email: safetylink@heightsafety.com.au
Phone: 1300 789 545 | Fax: 1300 738 071
or visit our website www.heightsafety.com

**INSTALLATION HANDBOOK
FOR
TEMPORARY ANCHOR**

	Page
WARNINGS	3
MAINTENANCE – PERIODIC & BEFORE EACH USE INSPECTIONS	4 - 5
WARRANTIES	6
Fixed LadderLink: Ladder Support Bracket	7 - 8
Temporary Anchor	9 - 10
APPENDIX	
Diagram 2 – SafetyLink Anchor Points Positioning Layout	11
Diagram 3 – SafetyLink Anchor Points Positioning Layout	12
TempLink Inspection Record	13
IN CASE OF ACCIDENT	14





WARNINGS

READ CAREFULLY SOMEONE'S LIFE DEPENDS ON IT

The building or structure for the anchorages should be assessed by an engineer, unless it is clear to a competent person that the anchorages system is structurally adequate.

INSTALLATION MUST BE CARRIED OUT BY, OR UNDER THE SUPERVISION OF A COMPETENT PERSON.

- ⚠ **DO NOT OVERTENSION SCREWS AS THIS MAY RESULT IN EYELET DAMAGE, CRACKING OR BURRING.**
- ⚠ **TempLink anchors must not be used for rope access (abseiling).**
- ⚠ **Maximum user per TempLink is one (1).**
- ⚠ **Inspect your TempLink before each use (see Maintenance – Before Each use page 5).**
- ⚠ **Use log at the back of this guide for six monthly inspection records.**
- ⚠ **Inspect the date of manufacture and the remove from service date, product life does not exceed 10 years.**
- ⚠ **All safety procedures must be complied with in accordance with the current legislation and regulations. Ensure safety at all times by being attached to anchor point approved safety equipment, using a scaffold or a secured ladder.**
- ⚠ **The *TEMPLINK* is designed as a temporary anchor only and should not be left unattended or exposed to the elements for prolonged periods of time. Do not leave the TempLink installed overnight.**
- ⚠ **It is recommended that the Templink be uninstalled when not in use and stored in its bag in a safe, clean & dry environment free from chemicals and UV light.**
- ⚠ ***Live Load on Anchors: This anchor is NOT an abseil anchor, limit live load up to 100kg. If they are subjected to a live load greater than 100kg the force may trigger the energy absorbing regions and need to be replaced. All our surface mounted anchors have been tested in a free fall situation so should a person fall on a steep pitched roof the anchor will easily arrest a fall.***
- ⚠ **If any doubt exists as to the strength of the structure or roof sheets an engineer should make the assessment.**
- ⚠ **During installation you must be safe at all times.**
- ⚠ **Installation must be carried out by, or under the supervision of a competent person.**
- ⚠ **WARNING: TempLink Anchors should be positioned a minimum of 2 metres from the edge on Cliplock roofs.**

Regular inspection and care of your equipment is of the utmost importance. SafetyLink recommends that with all regular use personal protective equipment (PPE), the TempLink should be destroyed after 5 years from the date of first use. The product typically has a lifespan of 10 years from the date of manufacture, even if never used.

⚠ FOR MAINTENANCE ADVICE AND SERVICES PLEASE CONTACT SAFETYLINK ON 0249 972272 OR 1800 972272 FOR YOUR NEAREST SAFETYLINK INSPECTION SERVICE CENTRE OR EMAIL: safetylink@heightsafety.com.au

To download Installation Manuals on other SafetyLink products please visit our
Website at www.heightsafety.com



MAINTENANCE – PERIODIC & BEFORE EACH USE

All items of equipment which are in regular use shall be subjected to periodic inspection and servicing. These regular scheduled inspections and servicing must be carried out by a competent person.

Fixed LadderLink: Ladder Support Bracket

ALL LADDERLINKS MUST BE INSPECTED EVERY 12 MONTHS, INSPECTIONS NEED TO BE CARRIED OUT BY A COMPETENT PERSON.

Procedures to be followed at inspection time:

- Visually inspect ladder support brackets for any signs of deterioration or the protective coating being removed. (*Note: LadderLink is made from marine grade aluminium and therefore should not corrode*).
- Ensure LadderLink is firmly secured to the structure as per SafetyLink Installation Handbook. (*refer to Installing LadderLink Page 5*).

SafetyLink TEMPLINK

THE TEMPLINK MUST BE INSPECTED EVERYTIME BEFORE USE, SIX MONTHLY LOGGED SAFETY INSPECTIONS ARE ALL ALSO RECOMMENDED TO BE COMPLETED BY A COMPETENT PERSON.

Procedures to be carried out before each use:

- Feel and Visually inspect anchors in the following ways for signs of deterioration.
- Inspect the **webbing** for:
 - a) Cuts and tears.
 - b) Excessive stretching.
 - c) Damage due to contact with chemicals, heat, corrosives or solvents.
 - d) Deterioration due to rotting, mildew or ultraviolet exposure.
 - e) Abrasions and excessive wear, especially where contact with hardware has occurred.
 - f) Discolouration from exposure to chemicals or prolonged exposure to ultraviolet light.
 - g) Rigidity resulting from overloading or the TempLink sustaining a fall.
- Inspect the **eyelets** for:
 - a) Distortion as a result of a fall.
 - b) No eyelet.
 - c) Minor tearing around the eyelet which could indicate the TempLink has sustained a fall.
 - d) Excessive wear.
 - e) Free from dirt or other obstructions.
 - f) Burring of the eyelet.
- Inspect the webbing and eyelet joining position for signs of wear.
- Inspect the date of manufacture and the remove from service date, product life does not exceed 10 years.
- The TEMPLINK anchor point has one energy absorbing stainless steel component. If this energy absorbing region is expanded/distorted this will indicate the anchor point has arrested a fall and should be removed from service.
- Inspect the components of the anchor for corrosion, superficial surface marking is permitted while deeper corrosion or pitting will require attention.
- Consult TempLink user/s for any additional situations that may have caused damage to the TempLink.

If the TempLink has sustained any of the above issues it needs be replaced.



SafetyLink TEMPLINK

Cleaning Instructions

SafetyLink recommends that the TempLink be kept dry as much as possible due to treatments that have been applied to the webbing to aid in protection from UV light and dirt. If you do need to clean the TempLink use only warm water and no soap/detergent products.

Care/Maintenance:

Ensure the TempLink is stored in the following manner:

- a) Away from direct UV/sunlight.
- b) In a dry environment.
- c) Away from exposure from chemicals, heat, corrosives or solvents.

Regular inspection and care of your equipment is of the utmost importance. SafetyLink recommends that with all regular use PPE, the TempLink should be removed from service and destroyed after 5 years from the date of first use. The product typically has a lifespan of 10 years from the date of manufacture, even if never used.

The TEMPLINK is designed as a temporary anchor only and should not be left unattended or exposed to the elements for prolonged periods of time. Do not leave the TempLink installed overnight.

IN ADDITION TO SAFETYLINK PTY LTD EQUIPMENT, ALL EQUIPMENT MUST BE INSPECTED IN ACCORDANCE WITH AS/NZS 1891.4:2000 AND THE MANUFACTURER'S INSTRUCTIONS.

safetylink

EXTRACT: SafetyLink Pty Ltd STANDARD TERMS AND CONDITIONS

- 11.1 To the extent permitted by law all implied conditions, warranties and undertakings are expressly excluded.
- 11.2 Except as provided in this clause the Company shall not be liable for any loss or damage, whether direct or indirect (including consequential losses or damage) arising out of any breach of contract by the Company or any negligence of the Company, its employees or agents.
- 11.3 Should the Company be liable for a breach of a guarantee, condition or warranty implied by the Australian Consumer Law (not being a guarantee, condition or warranty implied by sections 51, 52 and 53 of that Law) then its liability for a breach of any such condition or warranty express or implied shall be limited, at its option, to any one or more of the following.
- A) in case of Goods
- (I) the replacement of the Goods or the supply of equivalent Goods.
 - (II) the repair of the goods,
 - (III) the payment of the cost of replacing the Goods or acquiring equivalent Goods.
 - (IV) The payment of the cost of having the Goods repaired.
- Provided that any such Goods are returned to the Company by the Purchaser at the Purchaser's expense.
- B) in the case of services
- (i) the supply of the services again,
 - (ii) the payment of the cost of having the services supplies again.
- 11.4 The Company will not liable for the costs of recovery of the Goods from the field, loss of use of the Goods, loss of time, inconvenience, incidental or consequential loss or damage, nor for any other loss or damage of her than as stated above, whether ordinary or exemplary, caused either directly or indirectly by use of the Goods.
- 11.5 The Company warrants that at the time of shipment, Products manufactured by it will be free from defects in material and workmanship. In the absence of a modified written warranty, the Company agrees to making good any such defects by repairing the same or at the Company's option by replacement, for a period of (1) one year from the date of shipment. This limited warranty applies provided that:
- (a) defects have arising solely from faulty materials or workmanship;
 - (b) the Products have not received maltreatment, inattention or interference;
 - (c) **the Products have been installed in accordance with the Company's Installation Handbooks using only products supplied by the Company;**
 - (d) accessories used with the Products are manufactured by or approved by the Company ;
 - (e) the Products are maintained in accordance with Australian Standard 1891.4 (section 9).
 - (f) you notify any claim under this warranty to SafetyLink in writing to the address below no later than 14 days after the event or occurrence concerning the produce giving rise to the claim and you pay all costs related to your claim.

This warranty does not apply to any defects or other malfunctions caused to the Goods by accident, neglect, vandalism, misuse, alteration, modification or unusual physical, environment or electrical stress.

Please note that the benefits to the purchaser (as a consumer) given by this warranty are in addition to your other rights and remedies under the Australian Consumer Law. Our goods come with guarantees that cannot be excluded under the Australian Consumer Law. You are entitled to a replacement or refund for a major failure and compensation for any other reasonably foreseeable loss or damage. You are also entitled to have the goods repaired or replaced if the goods fail to be of acceptable quality and the failure does not amount to a major failure.

- 11.6 If any goods are not manufactured by the Company, the guarantee of the manufacturer thereof shall be accepted by the Purchaser as the only express warranty given in respect of the goods.
- 11.7 Except as provided in this clause 11, all express and implied warranties, guarantees and conditions under statute or general law as the merchantability, description, quality, suitability or fitness of the Products for any purpose or as to design, assembly, installation, materials or workmanship or otherwise are hereby expressly excluded (to the extent to which they may be excluded by law).

PLEASE SEE SAFETYLINK PTY LTD FULL STANDARD TERMS OF CONDITIONS OF SALE FOR FURTHER REFERENCE.



FIXED LADDERLINK – LADDER SUPPORT BRACKET

Product Code: LADFX001

INSTALLATION:

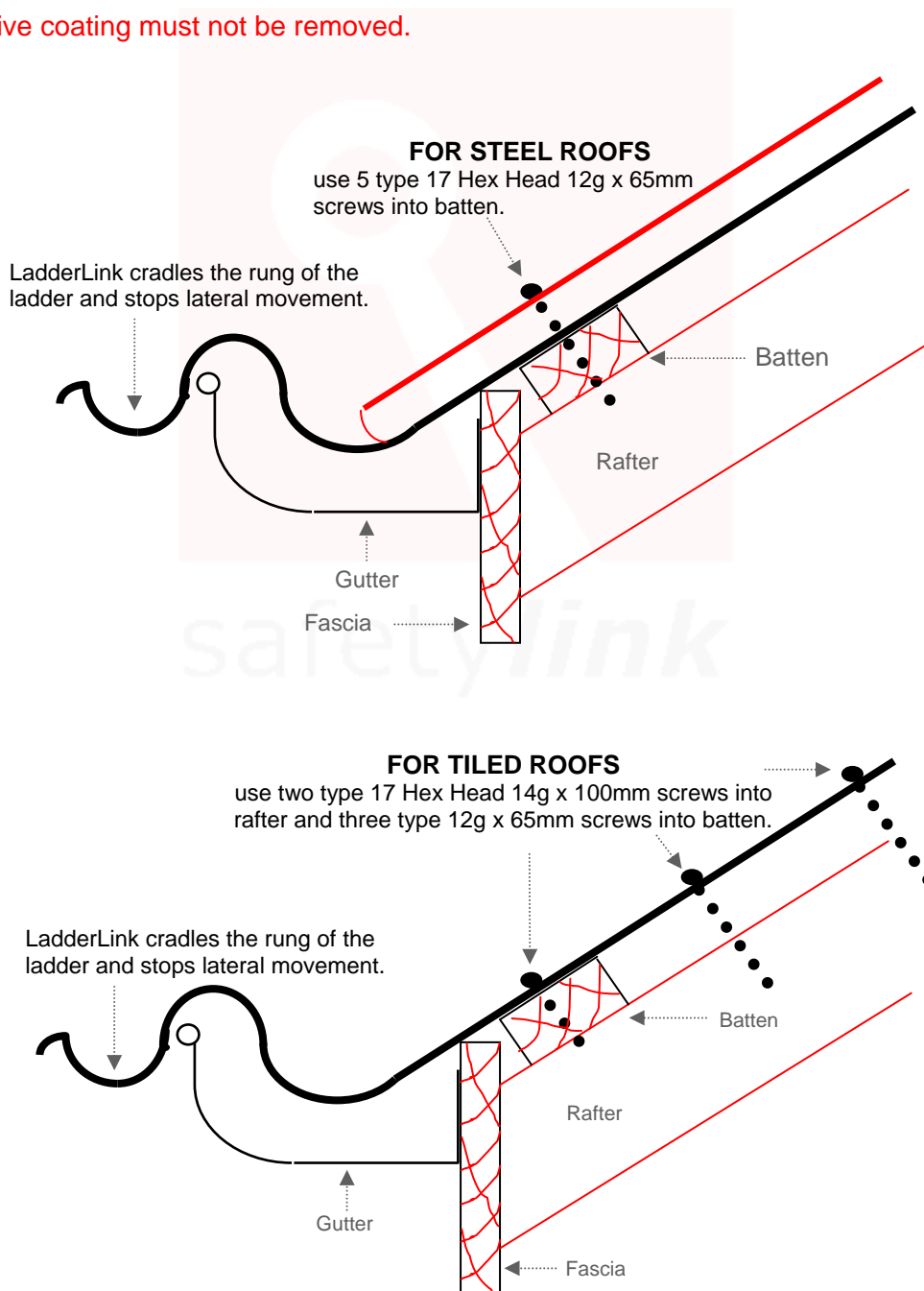
All safety procedures must be complied with in accordance with the current legislation and regulations. Ensure safety at all times by being attached to anchor point approved safety equipment, using a scaffold or a secured ladder.

Fixed LadderLink: Safe Ladder Access

Made from marine grade aluminium the LadderLink is designed to support a ladder, stopping sideways movement and therefore holding the ladder in place safely. In addition the LadderLink has securing points to tie off the ladder providing a safe access point.

To install the LadderLink simply place under the roof sheeting or tiles and secure to the top of a rafter and roof batten as shown in the drawings below.

- ⚠ Adjust the pitch of the LadderLink using a SAFETYLINK LADDERLINK BENDER ONLY. LadderLink is made from high tensile aluminium therefore use of a standard folder may crack the aluminium.
- ⚠ Protective coating must not be removed.





FIXED LADDERLINK – LADDER SUPPORT BRACKET

Product Code: LADFX003

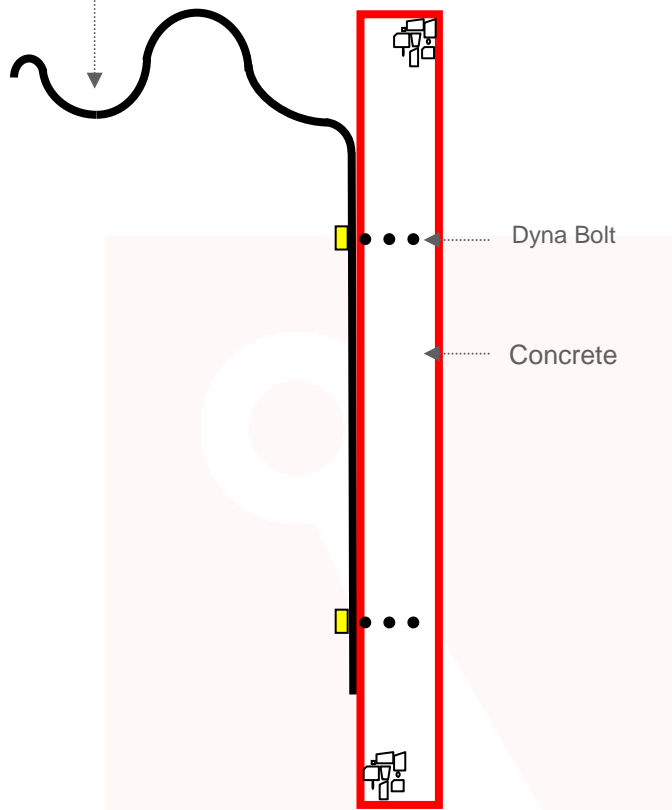
FIXING TO CONCRETE WALL/PARAPET

Drill and install 4 (four) x 10mm Dyna bolts or equivalent chemical anchor. Bolts need to be a minimum of 150mm from an edge.

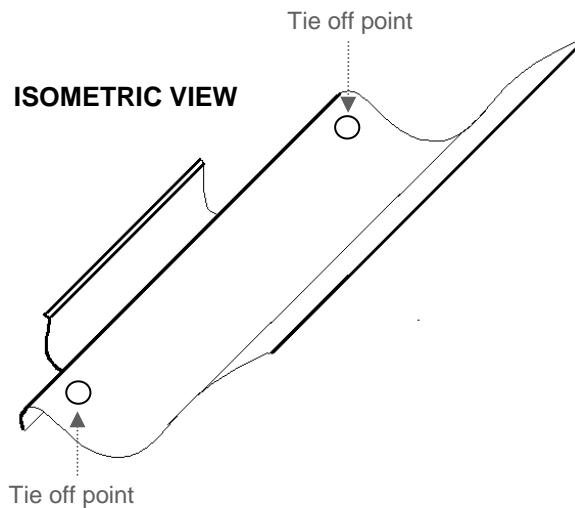
FIXING TO TIMBER WALL/PARAPET

Drill and install 4 (four) x size 14-10 x 75mm roofing screws.

LadderLink cradles the rung of the ladder and stops lateral movement.



safetylink



INSTALLATION: TO THE SURFACE OF A ROOF

- ⚠ **TEMPLINK ANCHORS MUST NOT BE USED FOR ROPE ACCESS (ABSEILING).**
- ⚠ **MAXIMUM USER PER TEMPLINK IS ONE (1).**
- ⚠ **DO NOT OVERTENSION SCREWS AS THIS MAY RESULT IN EYELET DAMAGE.**
- ⚠ ***The TEMPLINK is designed as a temporary anchor only and should not be left unattended or exposed to the elements for prolonged periods of time. Do not leave the TempLink installed overnight.***

All safety procedures must be complied with in accordance with the current safety code(s) of practice(s) for working at heights. Ensure safety at all times by being attached to anchor point approved safety equipment, using a scaffold or a secured ladder.

Positioning of TempLink Anchor Point (refer to appendix diagrams 2 and 3)

The first TempLink must be in a position easily reached by a secured ladder or a manhole access point. Access to underside of roof is not required. It is recommended the TempLink be installed to the top of the roof sheeting profile, where this is not practical the TempLink may be installed into the pan away from debris.

Inspect the structure and roof sheeting

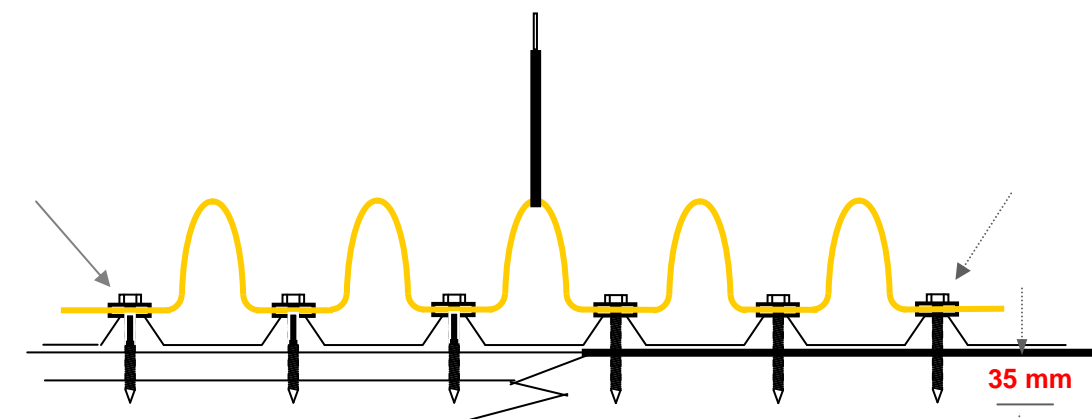
- Inspect for splits, rust, corrosion damage and to see how well the roof sheet is secured to the structure.
- Minimum roof sheet size is 0.42mm.
- Attach anchors only to roof sheets able to support the anchor point.

Metal Batten/Metal Roof Sheeting

1. Remove existing roof screws situated in desired location of Temporary Anchor.
2. The webbing is placed over the top of the roof sheeting and the eyelets adjusted to fit over the roof profile.
3. Screw Six (6) x Size 14 -10, Roofing Tek's Hex Head Screws into each existing hole and into the batten. **DO NOT OVERTENSION SCREWS AS THIS MAY RESULT IN EYELET DAMAGE.**
4. Ensure the screws are the correct length to engage the batten to eliminate over passing the thread into the blank part of the screw.

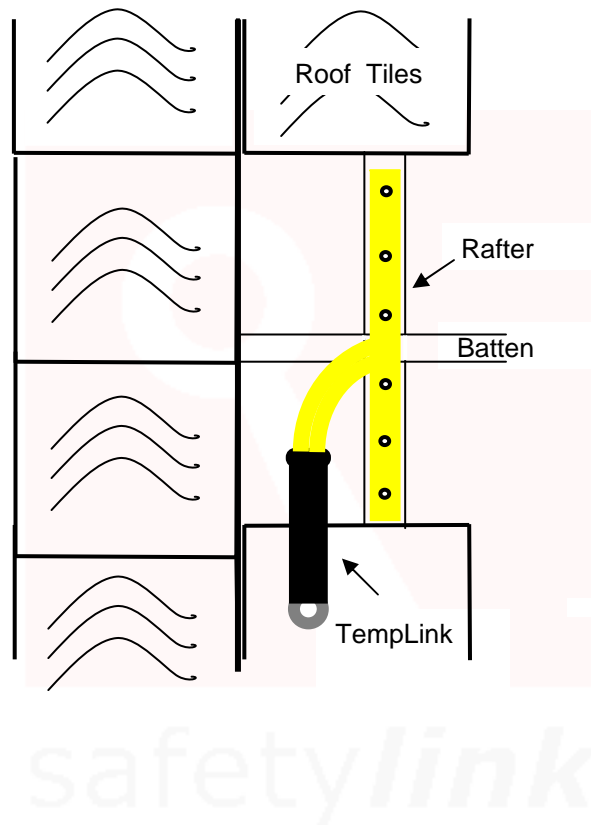
Timber Batten/Metal Roof Sheeting

- a. Remove existing roof screws situated in desired location of Temporary Anchor.
- b. The webbing is placed over the top of the roof sheeting and the eyelets adjusted to fit over the roof profile.
- c. Screw Six (6) x Size 14 -10, Roofing Type 17 Hex Head Screws into each existing hole and into the batten. **DO NOT OVERTENSION SCREWS AS THIS MAY RESULT IN EYELET DAMAGE.**
- d. Screws must penetrate timber batten by at least 35mm.



Timber Batten/Tile Roof

1. Remove existing roof tiles situated in desired location of Temporary Anchor.
2. Place the webbing on the Rafter and drill a 4.5mm pilot hole.
3. Screw webbing to the rafter through the eyelets from the top to the bottom no less than 100mm apart using screw six (6) x size 14 -10, Roofing Type 17 hex head screws. **DO NOT OVERTENSION SCREWS AS THIS MAY RESULT IN EYELET DAMAGE.**
4. Screws must penetrate timber batten by at least 35mm.



The SafetyLink Anchor Point is now ready for use, giving you an anchor point to attach to while installing the next SafetyLink.

- ⚠ The TEMPLINK is designed as a temporary anchor only and should not be left unattended or exposed to the elements for prolonged periods of time. Do not leave the TempLink installed overnight.**

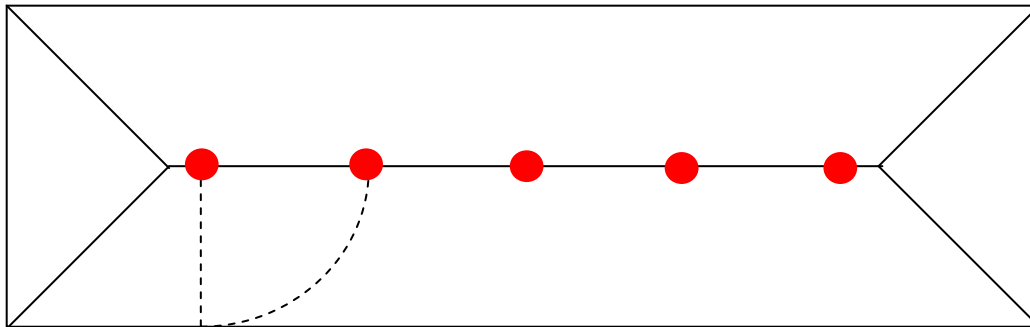


DIAGRAM 2 – POSITIONING LAYOUT :

THIS IS A GUIDE ONLY

All Safety procedures must be complied with when installing SafetyLink anchor points. For more information refer to WorkCover in regard to current safety code/s of practice/s for working at heights.

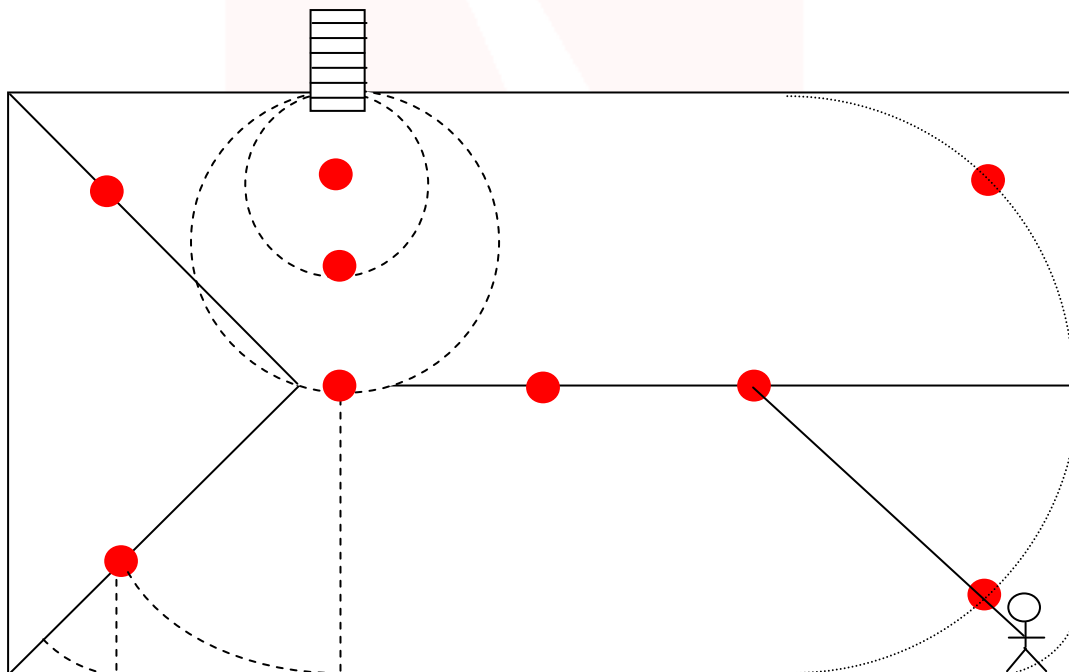
SafetyLink anchors are recommended to be six (6) metres apart. Spacing must be no greater than the rafter length. Please contact your distributor if you are unsure.



LADDER AND/OR ACCESS TO A ROOF

SafetyLink Anchor Points are placed by calculating the pendulum effect.

(The pendulum effect still applies to a flat concrete roof)



SafetyLink hip spacing must be no greater than the Rafter length measured from the hip.

SafetyLink is designed to withstand a drop force of 22.1kN in accordance with Test Specifications: Appendix G of AS/NZS 1891.1:1995.
Attach only to structure able to support the anchor point.

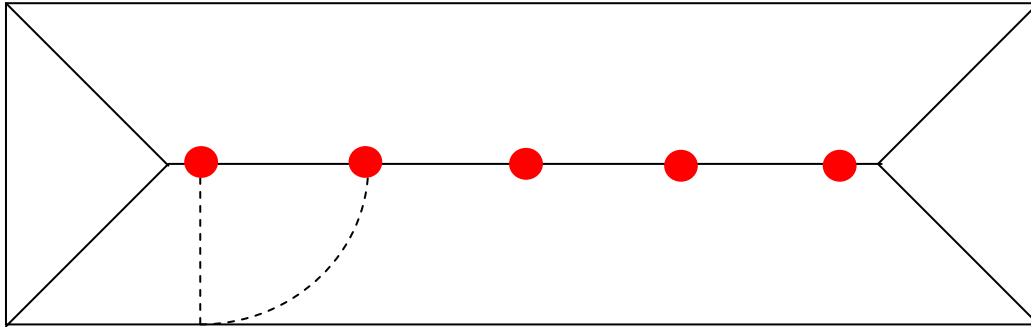


DIAGRAM 3 – POSITIONING LAYOUT :

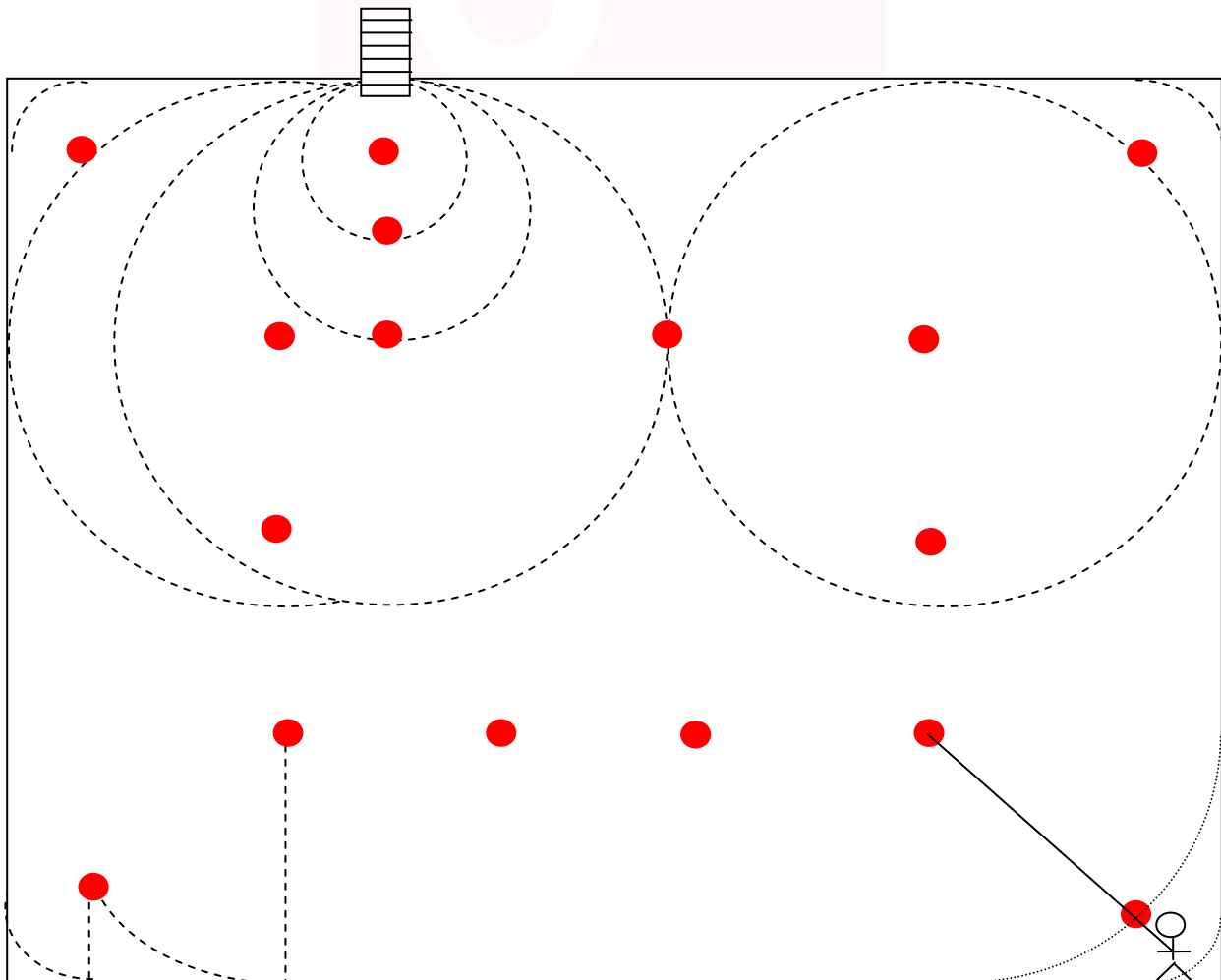
THIS IS A GUIDE ONLY

All Safety procedures must be complied with when installing SafetyLink anchor points.
For more information refer to WorkCover in regard to current safety code/s of practice/s for working at heights.

SafetyLink anchors are recommended to be six (6) metres apart. Spacing must be no greater than the rafter length. Please contact your distributor if you are unsure.



LADDER AND/OR ACCESS TO A ROOF
SafetyLink anchor points are placed by calculating the pendulum effect.



SafetyLink is designed to withstand a drop force of 22.1kN in accordance with
Test Specifications: Appendix G of AS/NZS 1891.1:1995.
Attach only to structure able to support the anchor point.

IN CASE OF ACCIDENT

⚠ A FALL RESCUE PLAN SHOULD BE DEVELOPED PRIOR TO USING SAFETYLINK EQUIPMENT.

⚠ Persons working at heights should not work alone.

It is critical that before using any SafetyLink Systems a fall rescue plan is in place for any persons suspended mid-air following a fall. Serious injury or death can occur in a matter of minutes, particularly if a person's movement or breathing is restricted or loss of consciousness has occurred. In accordance with your fall rescue plan and appropriate first aid procedures it is essential to remove the person from the suspended position as quickly as possible.

In accordance with AS/NZS 1891.4:2000 clause 9.5

EQUIPMENT WHICH HAS ARRESTED A FALL OR SHOWS A DEFECT

Any piece of equipment including both personal and permanently installed items, which has been used to arrest a fall or which shows any defect during operator or periodic inspection shall be withdrawn from service immediately and a replacement obtained if necessary. A label indicating the condition or defect should be attached to the equipment, and it should be examined by a competent person who will decide whether the equipment is to be destroyed or repaired if necessary and returned to service. In the latter case, details of any repair shall be documented and a copy given to the operator.



DISTRIBUTOR:

www.heightsafety.com